

WORK  MONITOR ARMS



# STRELA

## FLAT SCREEN MONITOR ARM

ABL's Strela combines value and versatility into a single product solution. The aluminium arm creates a stylish and elegant look adding to any home or office décor. The flexible arm joint and rotating/tilting VESA plate allows the user to adjust the height and angle of monitors, offering the optimum viewing experience. Strela is ideal for virtually any application due to its' ability to easily rotate between portrait and landscape orientation.

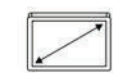
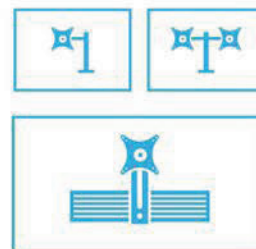
## PRODUCT SPECIFICATION



- 360° Rotary VESA Plate: for better viewing experience
- Free-Tilting Design: for multiple monitor viewing angles
- Built-in Cable Management: for an organised and neat workspace
- Aluminium Construction: provides a sleek, lighter, and elegant look
- Quick-Release VESA Plate: for easy installation
- Keyhole Pattern: allows easy installation
- Swiveling Arm(s): offer(s) maximum viewing flexibility

## AVAILABLE OPTIONS

## AVAILABLE COLOURS



17"-32" (24")



75x75 & 100x100



+180°~-180°



+30°~-30°



+90°~-90°



8kg



Yes

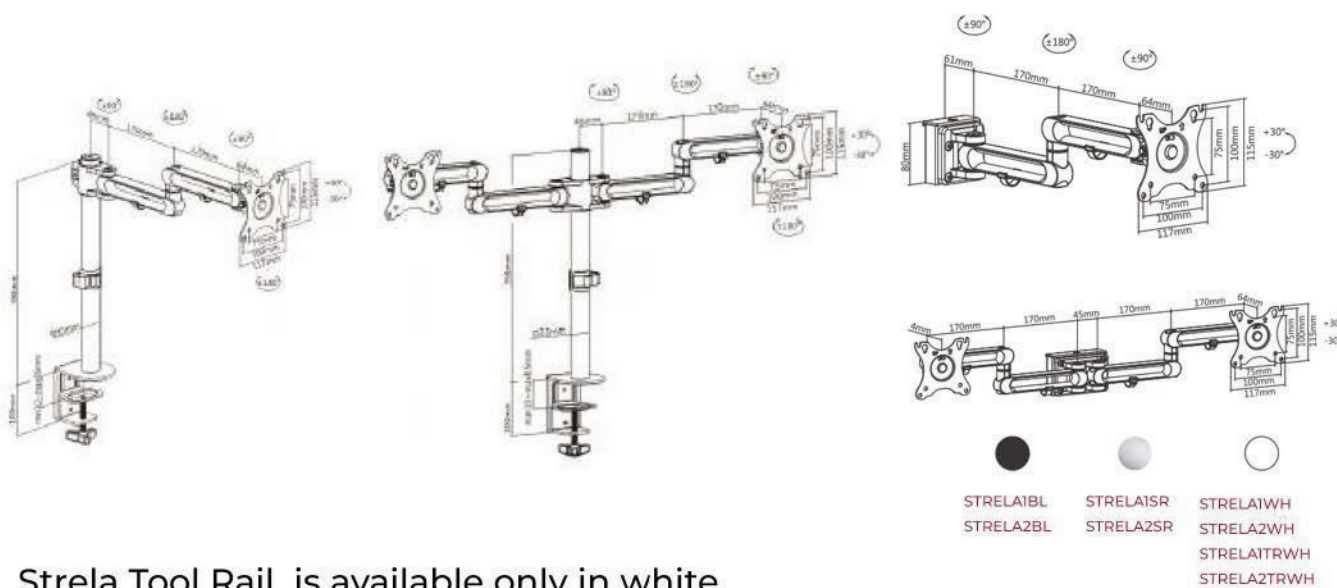


Yes



Clamp

# INSTALLATION AND DIMENSIONS



Strela Tool Rail is available only in white.



# FSA

## FLAT SCREEN MONITOR ARM

The well being of employees in the office space is becoming more vital, and the number one cause of lower neck pain is due to incorrect monitor positions. ABL are proud to offer a range of monitor arms designed to easily move and position the screen to the correct eye level. View our full range of FSA flat screen monitor arms.

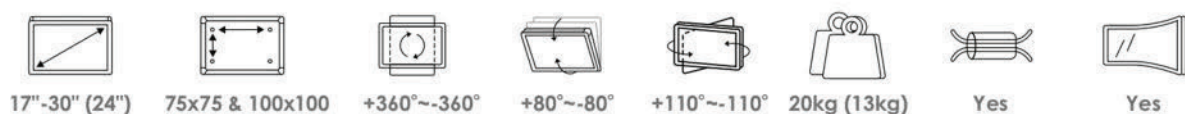
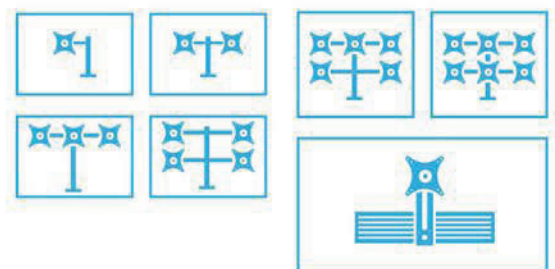
### PRODUCT SPECIFICATION



- Three Mounting Options: Clamp Fitting - Top fix and Under desk and Grommet Fitting
- WEEE NO: WEE/JD006TX
- Cable Management clips
- Available in up to six arms and Tool Rail
- Load capacity 20kg for single/13kg per arm for double and 8kg per arm for three more arms.

### AVAILABLE OPTIONS

### AVAILABLE COLOURS



17"-30" (24")

75x75 & 100x100

+360°~-360°

+80°~-80°

+110°~-110°

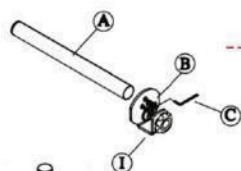
20kg (13kg)

Yes

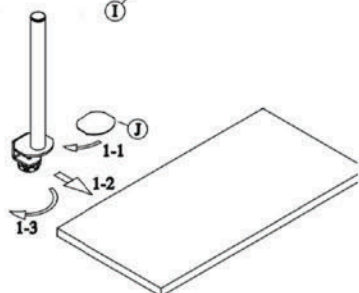
Yes



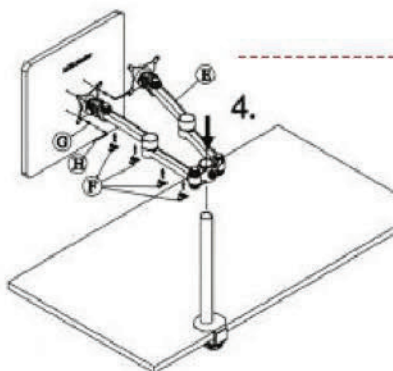
# INSTALLATION AND DIMENSIONS



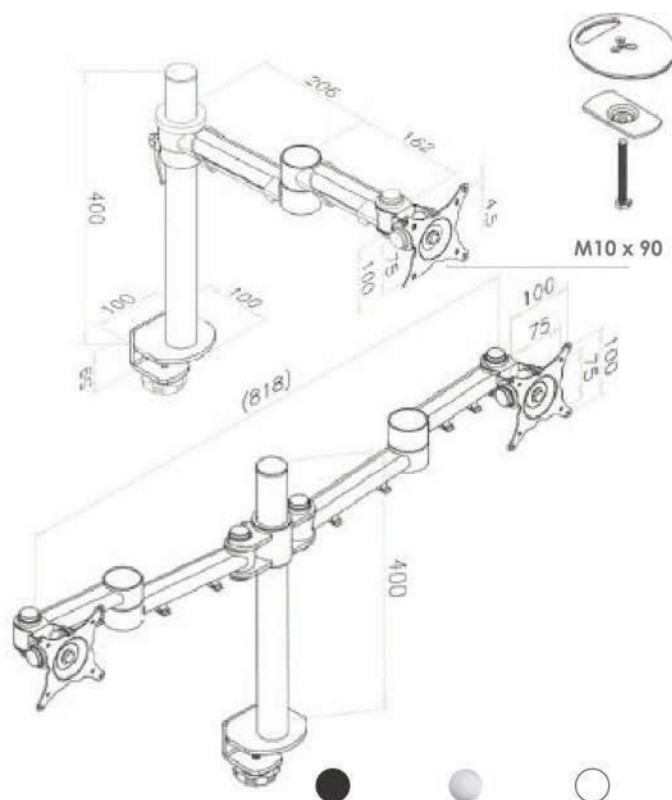
STEP 1



STEP 2



STEP 3



STRELA1BL  
STRELA2BL

STRELA1SR  
STRELA2SR

STRELA1WH  
STRELA2WH  
STRELA1TRWH  
STRELA2TRWH

# SIGMA

## SPRING ASSISTED MONITOR ARM

ABL's flat screen monitor arm Sigma is a quick to assemble and easy to use monitor arm facilitating the needs of single or double monitors. The effortless design allows the installer to fit the arm in minutes and the rotation/swivel features make it easy to meet the needs of the end user, as they can place the screen at the correct height to avoid neck and back tension

### PRODUCT SPECIFICATION



- Top fix installation and through desk bolt fitting included
- Smooth Arm Insertion: ensure easy installation
- Built-in Spring Tension Gauge: for perfect weight adjustments
- Spring-Assisted Mechanism: allows to easily move up and down
- Quick-Release VESA plate: for easy installation
- Cable management/Allen Key holder

### AVAILABLE OPTIONS

### AVAILABLE COLOURS



17"-32"



75x75 & 100x100



+90°~-90°



+90°~-90°



+90°~-90°



8kg

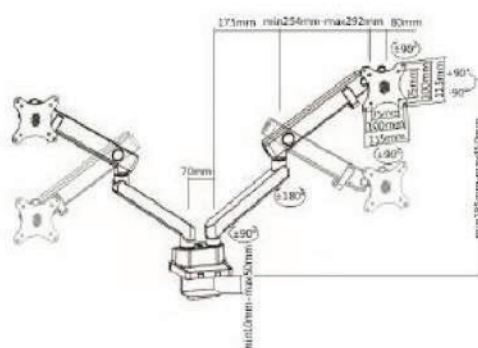
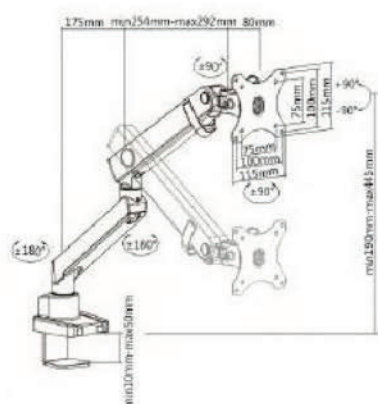


Yes



Yes

# INSTALLATION AND DIMENSIONS



STRELA1BL  
STRELA2BL



STRELA1SR  
STRELA2SR



# SINGLE HYDRAULIC MONITOR ARMS

## FEATURES:

- Easy to adjust the monitor angle and position to satisfy the different view
- Constant force function design, use the gas cylinder structure to help easy adjustment for comfortable viewing
- Both monitor and laptop could be adjusted separately without interference for the original dual-gas cylinder design



## SINGLE HYDRAULIC MONITOR ARMS

- Color: Silver, Black, White
- Model: HS-100-S
- Material: Aluminium
- Capacity: 2-10 kg , 8-20 kg

## TECHNICAL SPECIFICATION

- Name: Single hydraulic Monitor arms
- Color: Silver
- Material: Aluminium
- Model: HS-100-S



# INSTALLATION GUIDE

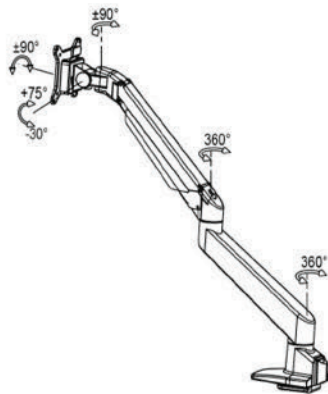
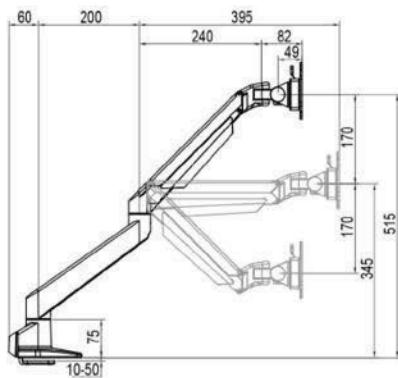
## LCD Monitor Arm // Installation Manual

Product name: **GTEK Single Monitor Arm**

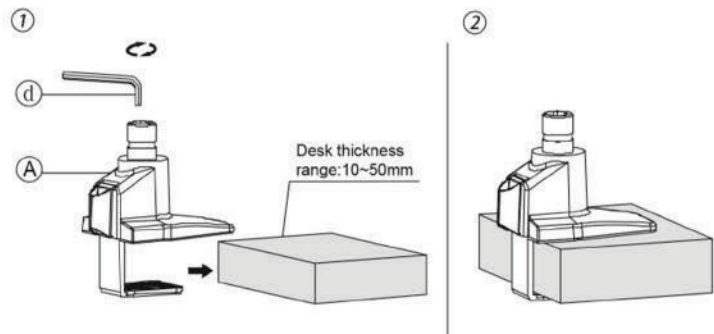
### Product Specification

Sketch											Desk thickness(mm)	
Item	Monitor size	Weight range (kg)	Lift(mm)	Tilt	Swivel	Pivot	VESA	Packing size (mm)	N.W(kg)	G.W(kg)	Thru-desk	Desk clamp
Specification	$\leq 30^{\circ}$	2-10	340	$+75^{\circ} \sim -30^{\circ}$	$\pm 90^{\circ}$	$\pm 90^{\circ}$	75*75	Inner: 475*195*140	Inner: 3.3	Inner: 3.8	50	50
		8-20					100*100	Outer: 490*210*440	Outer: 10	Outer: 11.9		
								Inner/Outer: 3/1				

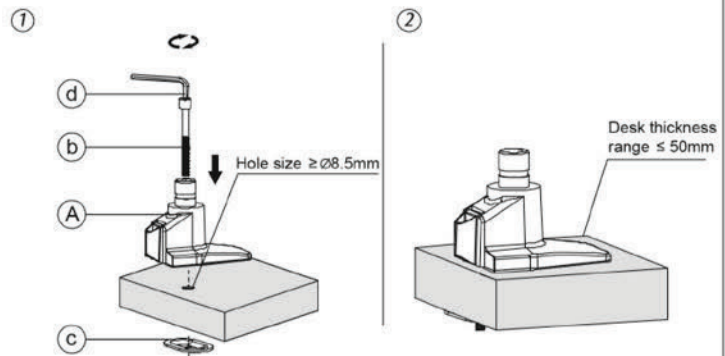
### Product Size



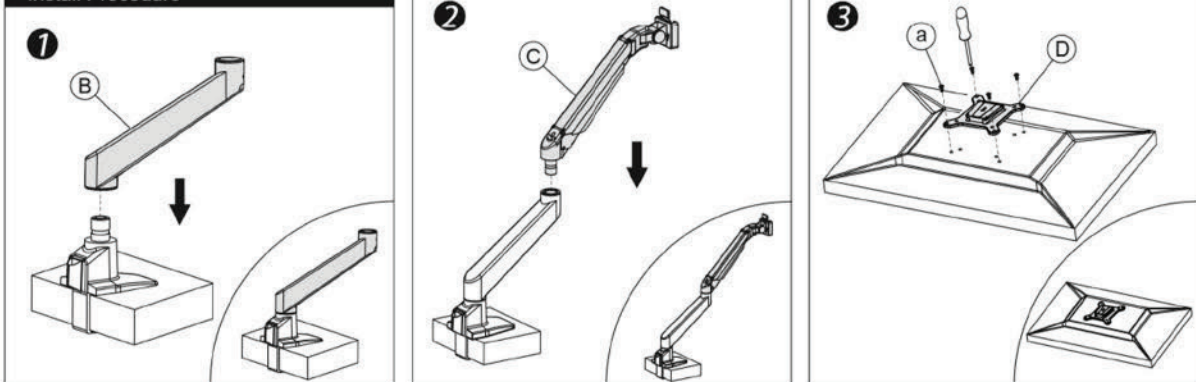
### Installation – Desk Clamp



### Installation – Thru-desk

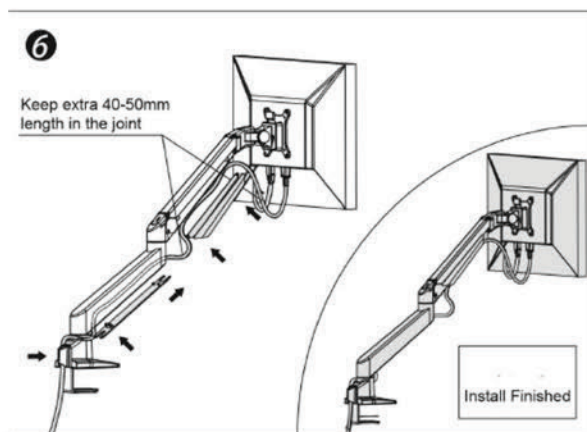
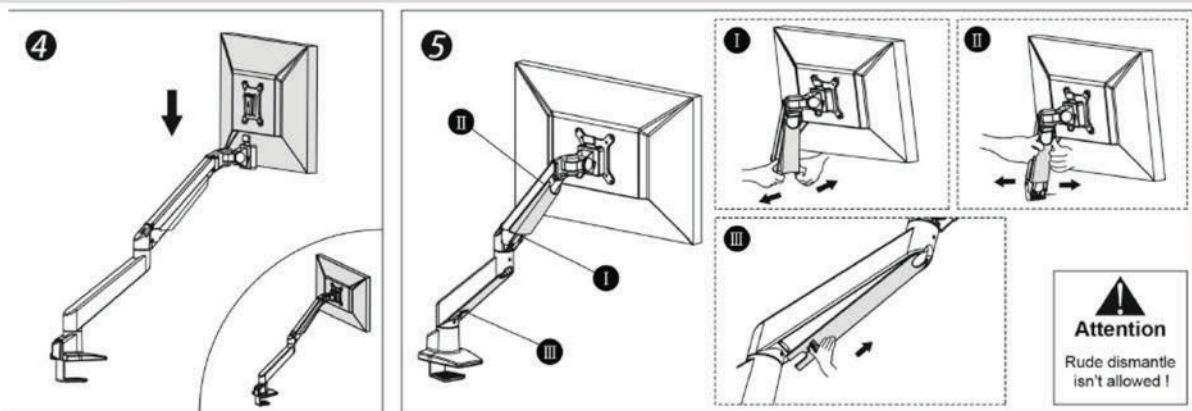


### Install Procedure





# DIMENSION SHEET



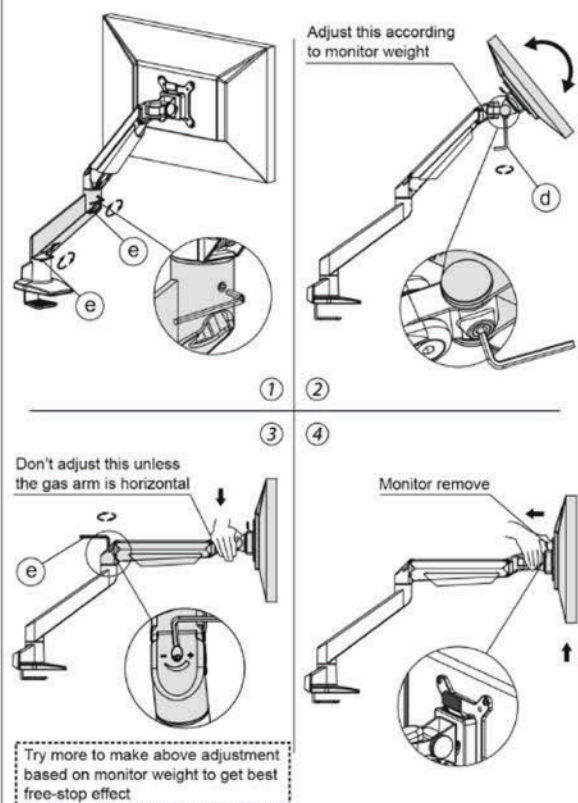
## Module List

No.	Sketch	Specs	Quantity
A			1
B			1
C			1
D			1

## Part List

No.	Sketch	Specs	Quantity
a		M4x12	4
b		M8x160	1
c			1
d		M6	1
e		M4	1

## Adjust Procedure



# PIPE-SHAPED COUNTERBALANCE SPRING-ASSISTED MONITOR ARMS



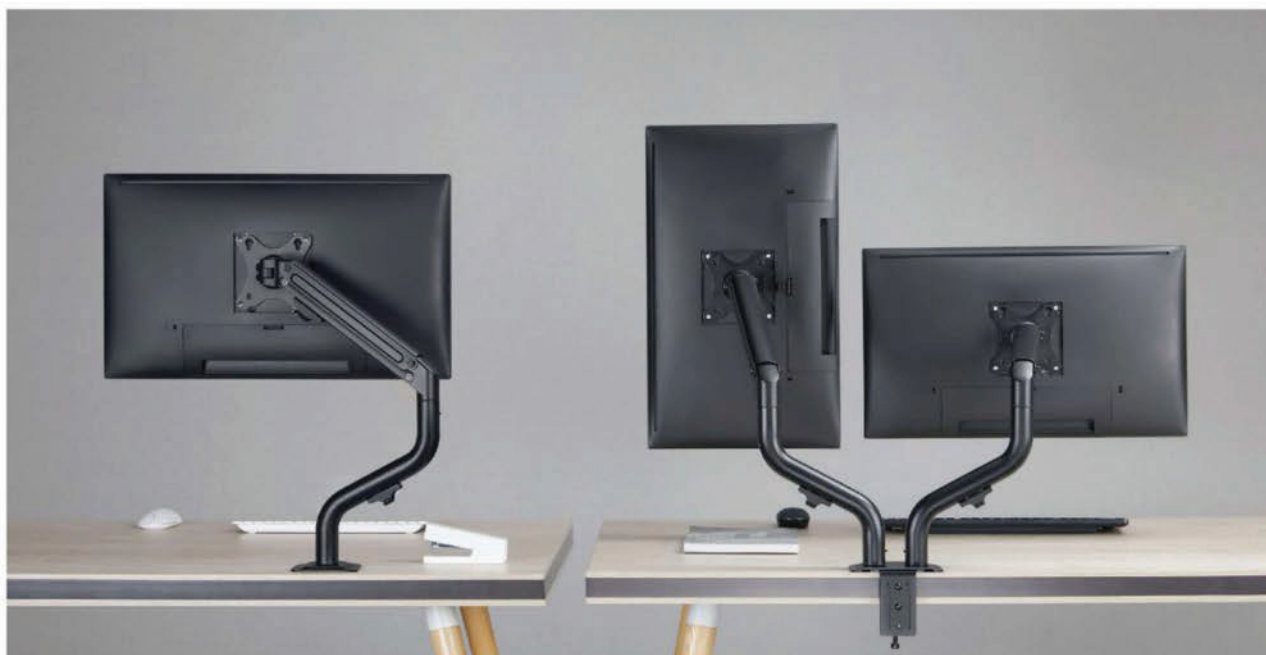
**DETACHABLE VESA PLATE**  
for quick attachment and detachment



**INTEGRATED CABLE MANAGEMENT**  
keeps desktop free of cords and clutter



**QUICK-RELEASE JOINT**  
for easy assembly and makes best use of  
packaging (perfect for e-commerce)



**LDT71-C012**

Clamp Only

**LDT71-C024**

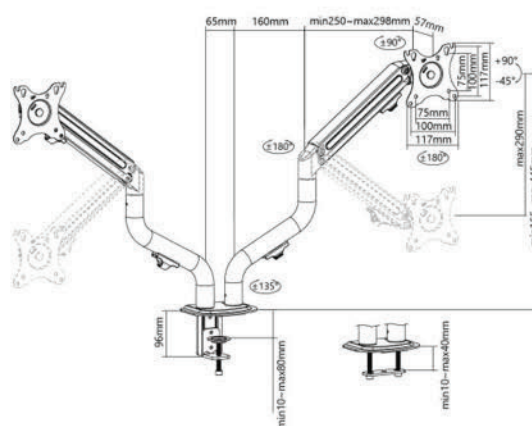
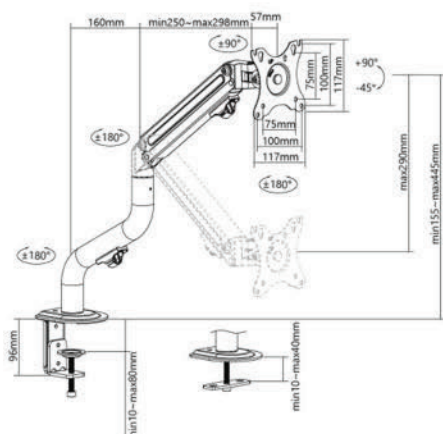
Clamp Only

**LDT71-C012N**

Clamp and Grommet

**LDT71-C024N**

Clamp and Grommet



Item No

LDT71-C012/LDT71-C012N

LDT71-C024/LDT71-C024N

Fit Screen Size

17"-32"

17"-32"

Weight Capacity (per screen)

2-8kg/4.4lbs-17.6lbs

2-8kg/4.4lbs-17.6lbs

VESA Compatible

75x75,100x100

75x75,100x100

Tilt Range

+90°- -45°

+90°- -45°

Swivel Range

+90°--90°

+90°--90°

Screen Rotation

+180°--180°

+180°--180°

Material

Steel, Aluminum,Plastic

Steel, Aluminum,Plastic



# DUAL LCD MOUNT



## DESCRIPTION

- 2 Dual section LCD arms.
- Adjustable height to raise your screen height and adapt your perspective.
- Tilt, rotate and swivel your arm and monitor to multiple comfortable position, effectively reducing the pain and strain on your neck and back.
- Deck clamp mount to the edge of your desk easily and firmly.

## SPECIFICATION

Application to	2LCD<32" with VESA hole
Vertical Angle	-80°~90°
VESA Compatible	75*75mm, 100*100mm
Max.load	1LCD<7kgs
Screen Rotation	360°
Clamp Range	6.5cm
Matreial	Aluminum & ABS
Color	Silver
Inner Box	53*25*13cm
Master Carton/Carton Ratio	54.5*54.5*27cm/4 pcs
G.W / CTN (KGS)	17.6

# DUAL LCD MOUNT



## DESCRIPTION

- 2 Dual section LCD arms.
- Adjustable height to raise your screen height and adapt your perspective.
- Tilt, rotate and swivel your arm and monitor to multiple comfortable position, effectively reducing the pain and strain on your neck and back.
- Desk clamp mount to the edge of your desk easily and firmly.

## SPECIFICATION

Application to	2LCD<32" with VESA hole
Vertical Angle	-55°~90°
VESA Compatible	75*75mm, 100*100mm
Max.load	1LCD<7kgs
Screen Rotation	360°
Desk Thickness	0.78"-2.36"
Height adjust range	3.40cm
Clamp Range	2.6cm
Matreial	Aluminum & ABS
Color	Silver/Black
Inner Box	45.5-34.12cm
Master Carton/Carton Ratio	47.35*35.7*48cm/4 pcs
G.W / CTN (KGS)	20.95

# GAS SPRING DUAL LCD MOUNT



## DESCRIPTION

- 2 gas spring arm with adjustment freely
- Adjustable height to raise your screen height and adapt your perspective.
- Tilt, rotate and swivel your arm and monitor to multiple comfortable position, effectively reducing the pain and strain on your neck and back.
- Desk clamp mount to the edge of your desk easily and firmly.

## SPECIFICATION

Application to	2LCD<32" with VESA hole
Vertical Angle	-55°~90°
VESA Compatible	75*75mm, 100*100mm
Max.load	1LCD<7kgs
Screen Rotation	360°
Desk Thickness	0.78"-2.36"
Matreial	Aluminum & ABS
Load	2-9kg
Color	Silver/Dark Grey
Inner Box	45*36*1212cm
Master Carton/Carton Ratio	74*46.5*26.5cm/4 pcs
G.W / CTN (KGS)	27.42



# GAS SPRING DUAL LCD MOUNT



## DESCRIPTION

- 2 gas spring arm with adjustment freely
- 1 Adjustable height platform-adjustable height to raise your screen height and adapt your perspective.
- Tilt, rotate and swivel your arm and monitor to multiple comfortable position, effectively reducing the pain and strain on your neck and back.
- Desk clamp mount to the edge of your desk easily and firmly.

## SPECIFICATION

Application to	2LCD<32" with VESA hole
Max.load	1LCD<7kgs
Height adjust range	3-40cm
Clamp range	2-6cm
Matreial	Aluminum & ABS
Color	Silver/Dark Grey
Inner Box	45*36*12cm
Master Carton/Carton Ratio	74*46.5*26.5cm/4 pcs
G.W / CTN (KGS)	27.42

# COMPUTER MOUNT



## DESCRIPTION

- 2 Dual section arms
- Adjustable height to raise your screen height and adapt your perspective.
- Tilt, rotate and swivel your arm and monitor to multiple comfortable position, effectively reducing the pain and strain on your neck and back.
- Desk clamp mount to the edge of your desk easily and firmly.

## SPECIFICATION

Application to	Universal
Max.load	1LCD<7kgs
Height adjust range	3-40cm
Clamp range	2-6cm
Matreial	Aluminum & ABS
Color	Silver
Inner Box	45*36*12cm
Master Carton/Carton Ratio	74*46.5*26.5cm/4 pcs
G.W / CTN (KGS)	17



## CONTACT US!

 +971 58 936 2100



 [www.workplace.ae](http://www.workplace.ae)

 [info@workplace.ae](mailto:info@workplace.ae) | [sales03@workplace.ae](mailto:sales03@workplace.ae)

 Workplace Furniture Trading llc, 103 - 34 Sai Business Center,  
Al Makhawi Building, Umm Hurair Street, Oud Metha,  
Dubai, UAE, Po Box 80744.